
BULLETIN 2000-041-EL

Revised May 24, 2016

ELECTRICALLY CONNECTED EXIT SIGNS

(Clarification of Rule 46-400 of the CEC, Part 1)

Rule 46-400 is intended to allow an exit sign to be connected to any of the following types of circuits.

- An A.C. circuit that is used for no other purpose (see Sketches #2 and #4),
- An A.C. circuit that also supplies power to A.C. emergency lighting (see Sketch #1),
- An A.C. circuit that also supplies unit equipment (see Sketches #3 and # 5), or
- A D.C. circuit that also supplies power to D.C. emergency lighting (see Sketches #3, #4 and #5).

(Original signed by)

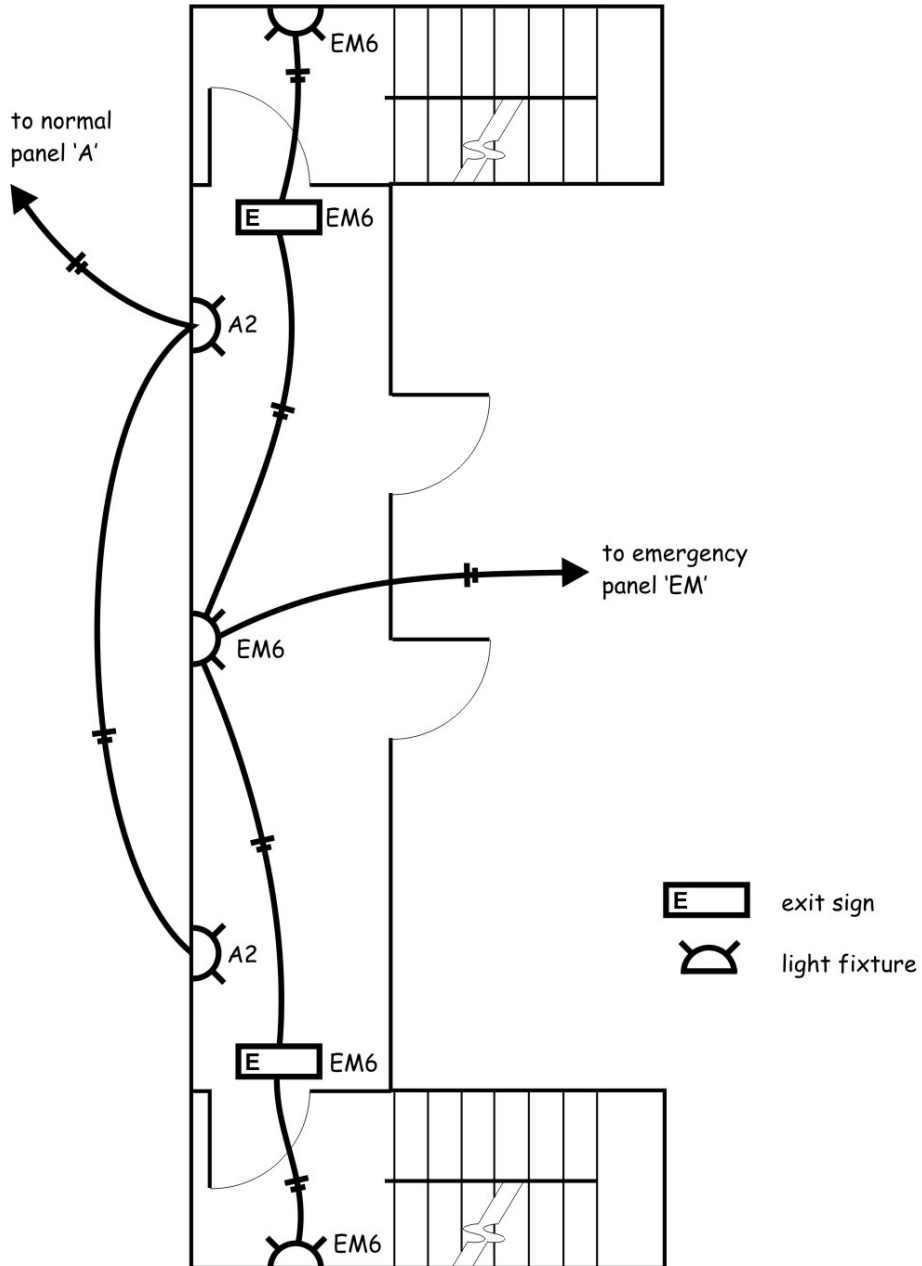
(Original signed by)

W. White
Manager of Trades Inspection
Deputy City Electrician

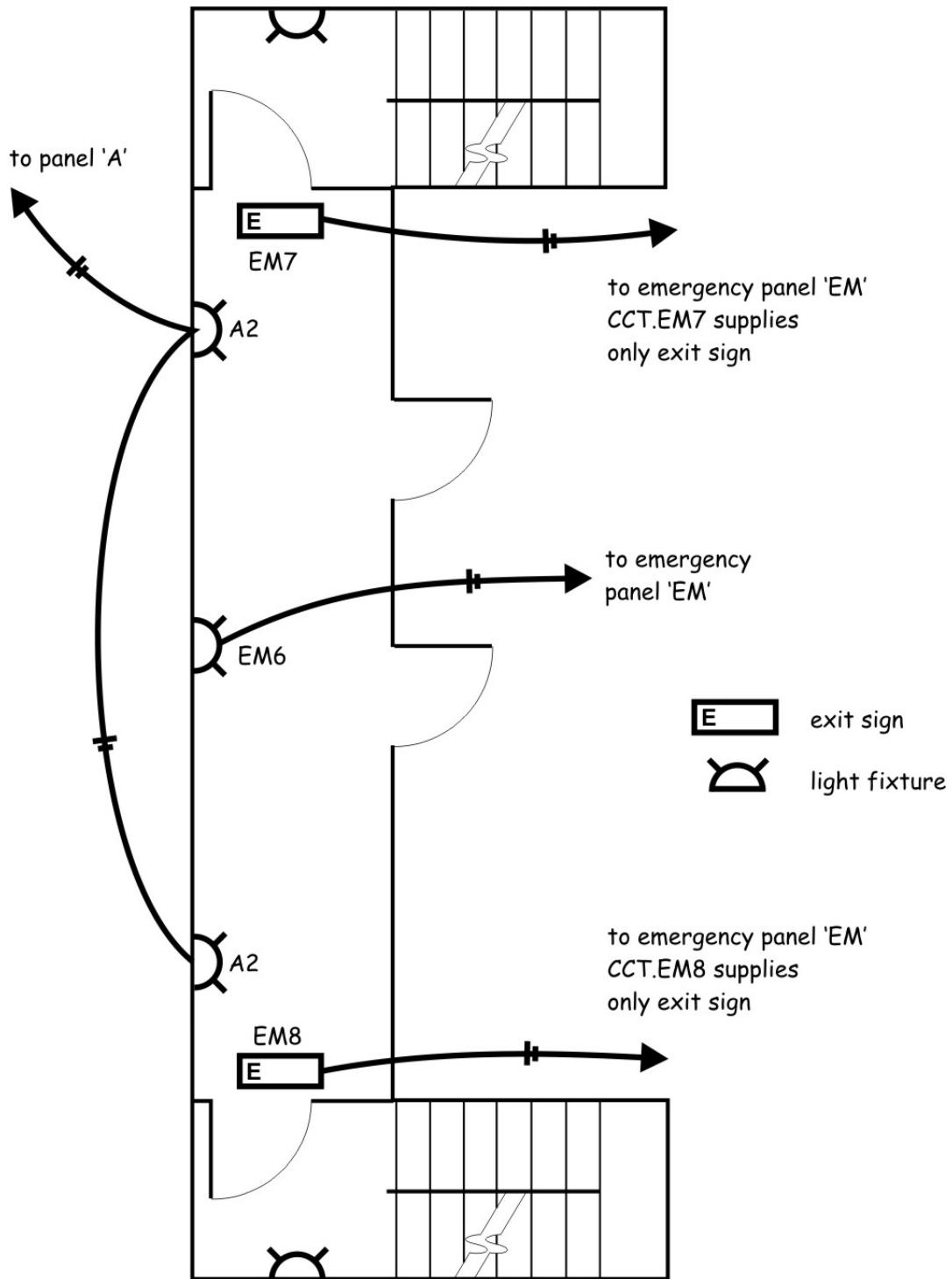
P. Ryan, M.Sc., P.Eng.
Chief Building Official
Director, Building Code and Policy

Attachment

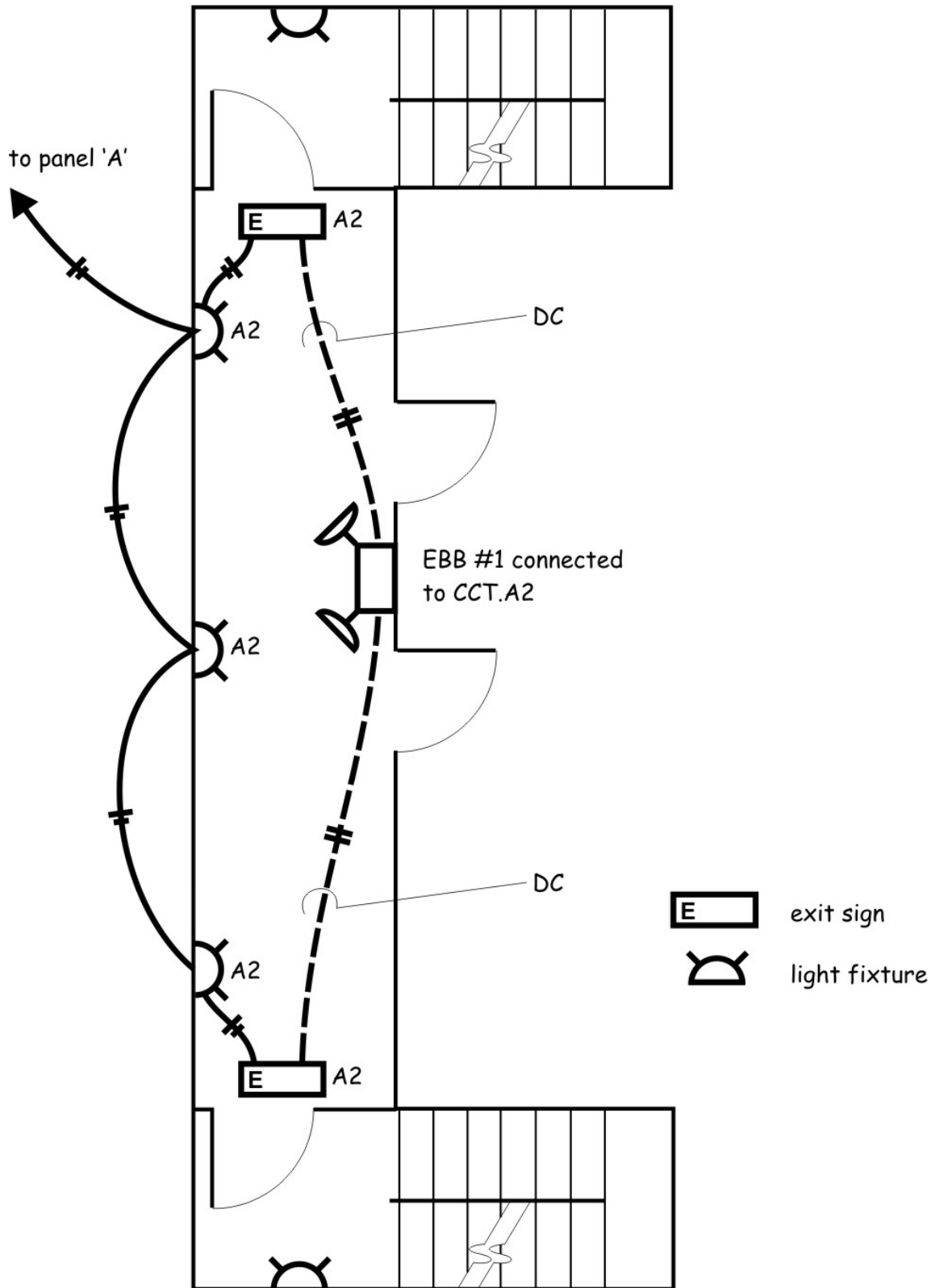
ELECTRICALLY CONNECTED EXIT SIGNS
(Clarification of Rule 46-400 of the CEC, Part1)



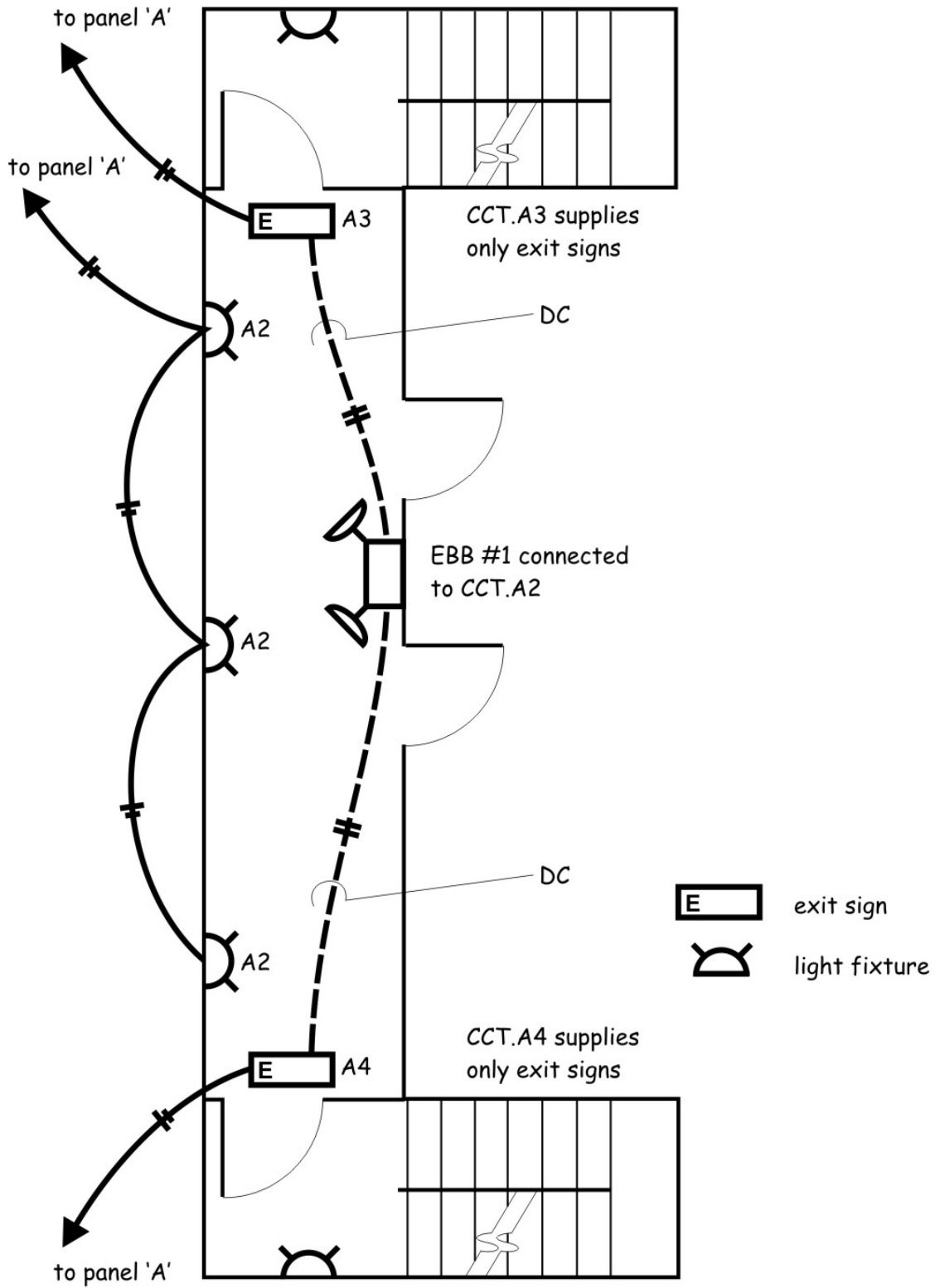
sketch 1



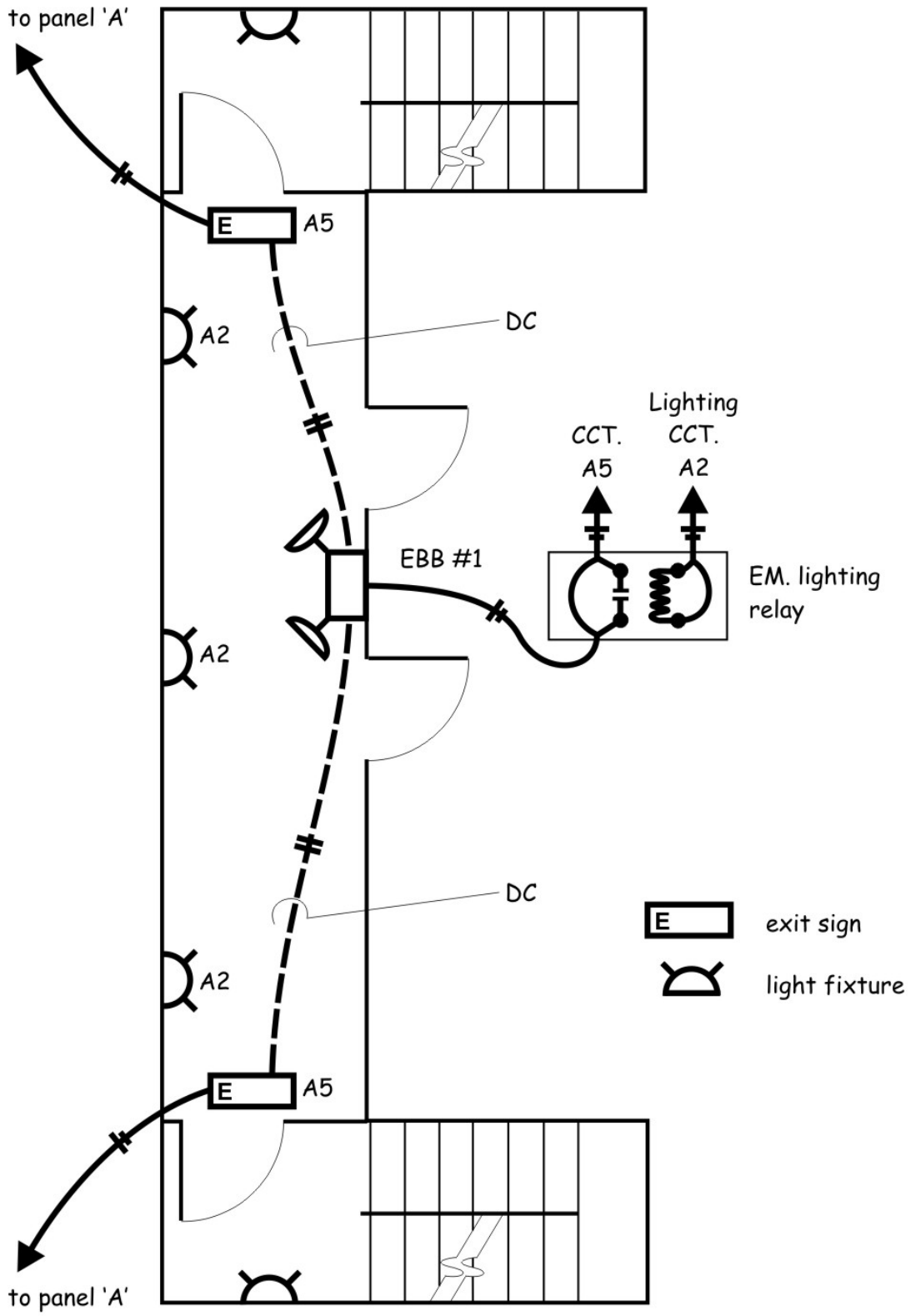
sketch 2



sketch 3



sketch 4



sketch 5